

MARTIN® SC16 SECONDARY CLEANER

The Martin® SC16 Secondary Cleaner incorporates individually-cushioned tungsten carbide blades for effective cleaning without risk to belt, splice or blade. Installed in the secondary cleaner position, the SC16's rubber blade buffers cushion impact and maintain effective cleaning pressure.



BENEFITS

Cushioned Blades Maintain Efficiency

Patented rubber buffers maintain cleaning pressure while deflecting to allow splices to pass.

Blades to Match Application

Specify tungsten carbide tips for normal, acidic or high impact conditions. Blades conform to belt profile by adjusting individually to provide continuous contact across the belt.

Easy Cleaner Removal

Mandrel Mount allows cleaner to be removed from chute for blade changes and will be charged extra.

APPLICATION NOTES

Martin Engineering recommends that the Martin® SC16 Secondary Cleaner be installed so the cleaning blade contacts the belt at a point 51 to 102 mm (2 to 4 in.) after the point where the belt leaves the head (discharge) pulley. If obstructions prevent installation at this point, or if additional cleaners are desired, the cleaner should be installed 51 to 102 mm (2 to 4 in.) past the point where the belt leaves the support idler.

See your Martin representative for more information, or visit www.martin-eng.com.

Built for Tough Conditions

Rugged construction withstands punishing applications, like high-speed belts and hightonnage loads.

Fits in Tight Spaces

Compact design allows installation in close quarters; narrow profile resists material build-up.

Handles Reversing Belts and Belt Rollback

Rubber buffers allow for reversal of belt direction without damage to belt.

SPECIFICATIONS

Maximum Belt Speed

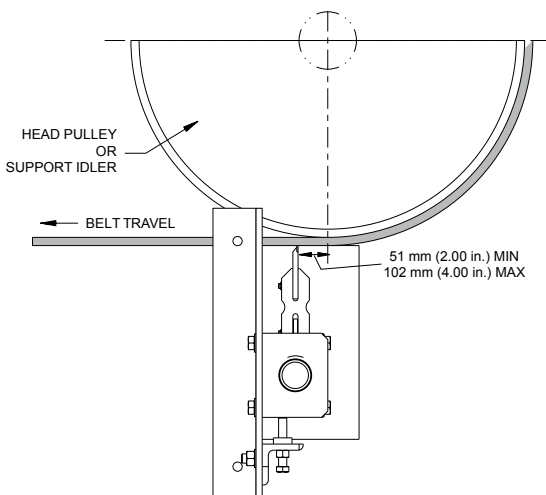
5.1 m/s (1000 fpm)

Service Temperature

121°C (250°F)

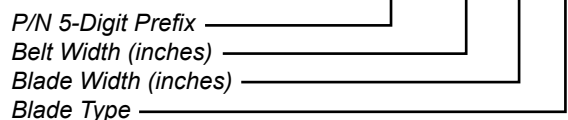
Blade Wear Life

10 mm (0.4 in.)



NOMENCLATURE

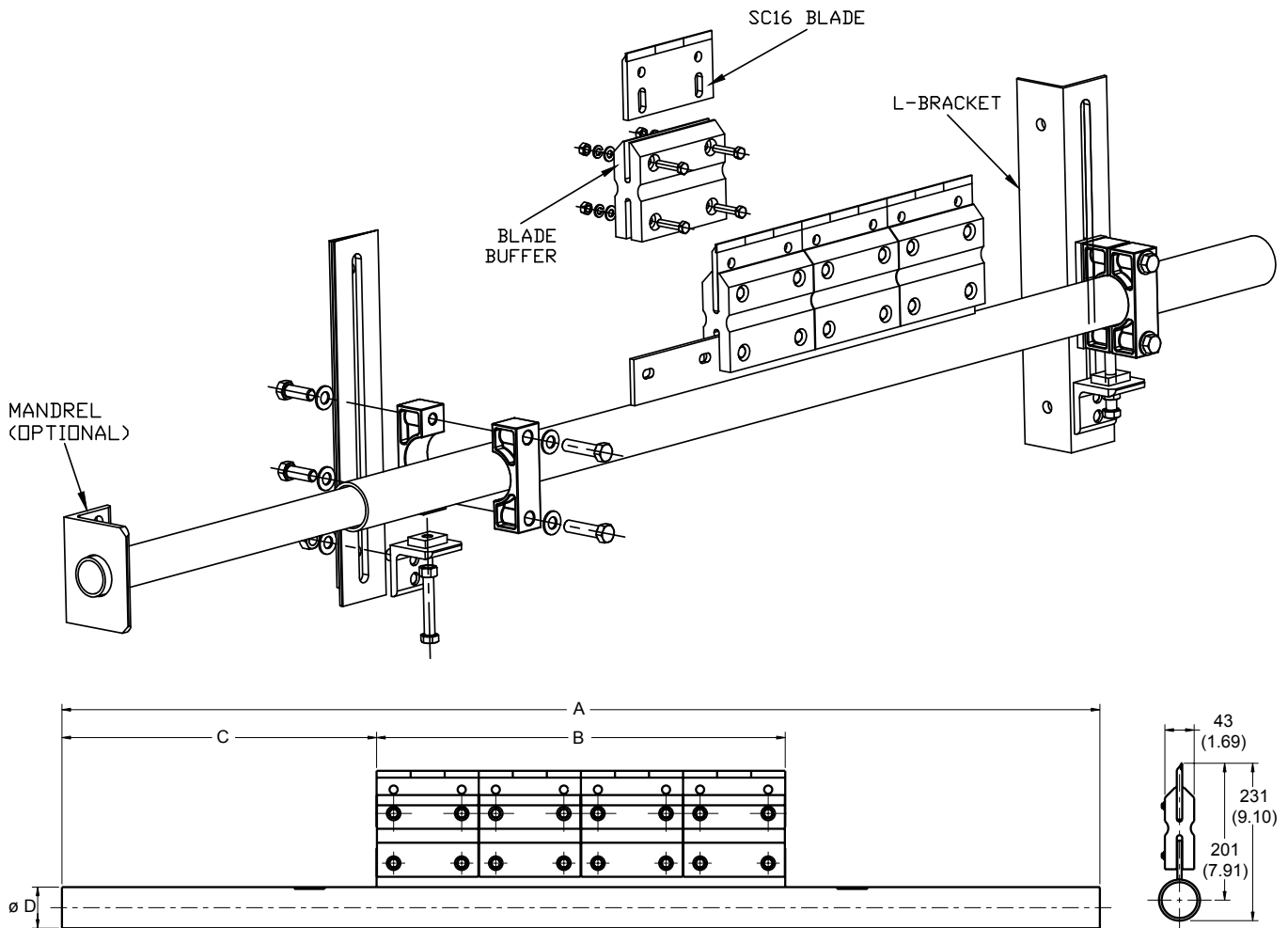
SC16 - XX XX X



BLADE TYPE

- C: Mild steel backing plate with tungsten carbide tip
- S: Stainless steel backing plate with tungsten carbide tip
- T: Mild steel backing plate with tool steel tip

TECHNICAL DATA SHEET



DIMENSIONS—MM (IN.)

Belt Width	Mainframe Length mm (in.)	Belt Coverage mm (in.)
450 (18)	1450 (58)	300 (12)
600 (24)	1600 (64)	450 (18)
750 (30)	1750 (70)	600 (24)
800 (36)	1900 (76)	750 (30)
1000 (42)	2050 (82)	900 (36)
1200 (48)	2200 (88)	1050 (42)
1400 (54)	2650 (106)	1200 (48)
1600 (60)	2800 (112)	1350 (54)
1800 (72)	2950 (118)	1650 (66)
2000 (78)	3100 (124)	1800 (72)
2200 (90)	3250 (130)	2100 (84)
2400 (96)	3400 (136)	2250 (90)

ACCESSORIES

Part	P/N
Buffer Assembly (A)	SC-10001-MRA
Blade Assembly (B)	SC-10002-X
SC16 Blade Assembly (A+B)	SC16-MRD-X
Blade Type	
C: Mild steel backing plate with tungsten carbide tip	
S: Stainless steel backing plate with tungsten carbide tip	
T: Mild steel backing plate with tool steel tip	



MARTIN ENGINEERING COMPANY INDIA PVT. LTD.

U Turn Industrial Hub, Shed No. 5
Gat No. 301, Kharabwadi, Chakan Tal-Khed
Dist - Pune - 410 501, Maharashtra, India

Phone: +91 2135 674000
Fax: +91 2135 674012
Email: guditn@martin-eng.com

www.martin-eng.in